

# MARTIN BODEN

FOR

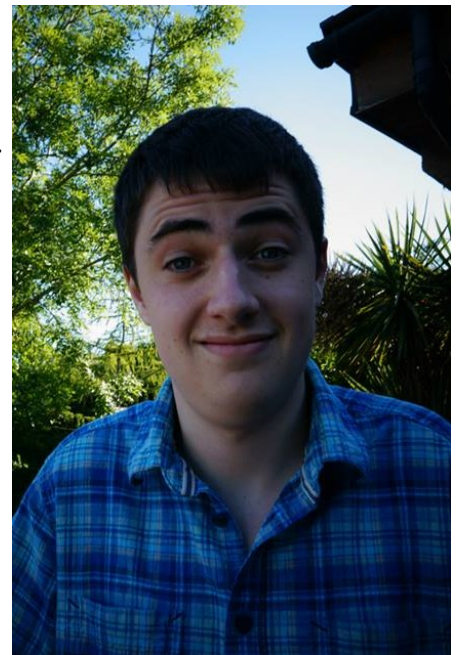
# DUKE OF WESELTON

(NOT WEASELTOWN)



Following the tragic passing away of the previous Duke, Weaselton needs **stability.**

Vote Martin Boden  
for stability!



My policies:

- Reopening trade with Arendelle
- Declare war upon the Southern Isles. Prince Hans was a fool for seconding me!
- Enslave the troll people to act as our magic servants

Why I will make a great duke:

- I am extremely anal about obeying the constitution
- I can seduce Queen Elsa of Arendelle
- I am an incredible dancer
- I don't have a left foot
- I am allergic to apples. Can you help me?
- You don't know what I am into